



Injection-402 Injection hose for Concrete Joints

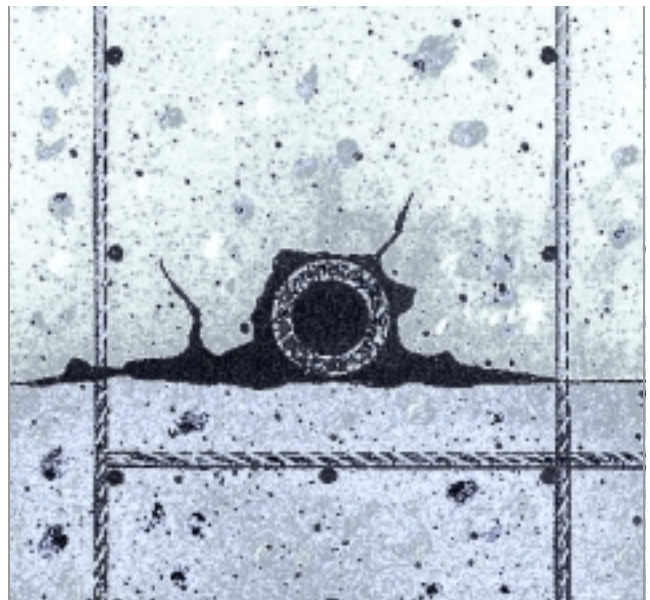
Injection-402 is a easy, functional and cost-effective injection system. The injection hose consist completely from high solid rubber. The porous hose is treated with a special material. Therefore the penetration of laitance into the porous system of the hose is impossible. This will avoid, that the laitance will cure and block the hose for injection.

Inject-402 is a functional system designt for the waterproofing of concrete structures with injection resins.* The hose is not recommended for the use with cementious injection grouts.

Handling and installation are very easy. The hose will be installed in the middle between the reinforcement steel. There is no problem to fix it at waterstops and crack-inducers. Inject-402 can be installed everywhere where the natural shrinkage of the concrete develops cracks and water can be get into.

**) Test report Matreialprüf- und Forschungsanstalt Leipzig*

Honey-combs and cracks will be filled with injection resin completely. This will produce a watertight concrete structure.



Injection-402 is available prefabricated or as kit. The prefabricated hoses consists from 10 m injection hose and two 70 cm vent ends in different colors. Packaging is 5 pcs. in a cardboard (=50 m)

Injection-402 on rolls is 250 m long. For ist fabricating we will deliver prefabricated vent ends in sets. The sets will contain the necessary accessories (shrink tubing and adhesive), too.

Even the prefabricated injection hoses can easily changed in length. Cut it in the middle and reduce it to the length you want. All you need is a scharp knife or scissors. Put the end together again, using a connection-nozle and fix it with a drop of the adhesive. The necessary accessories are part of the packaging.

Thought-out accessories make the hose to a complete system and make it easy to install even for the untraind user. Injection-402 will be fixed with fixing-clips to the concrete. We will deliver two types of fixing-clips – one with a plug-profile for use in drillholes, the other for use with nailguns.

The vent ends will be stored in a junction box, which will be installed at the reinforcement steel. The access is easily after the formers are dimantled.

Form of delivery

Ready to use prefabricated hose, each 10 m plus 2 X 0,7 m vent ends (blue and colorless). 5 connection-nozles, 1 tube adhesive and an installation description in a cardboard. 18 cardboards on a pallet or unfabricated on a roll, each 250 m.

Accessories

Fixing clip 416S

For use with a nailgun or nailing. PE-bag with 100 pcs.

Fixing clip 425

With a plug-profile, for use in drillholes. PE-bag with 100 pcs.

Fabricating set 412

Contains prefabricated vent ends in two different colors, shrink tubings and adhesive. Fits for the fabrication of 10 injection hoses. PE-bags in a cardboard.

Junction box 417

For the storage of the vent ends. Installation at the reinforcement steel (behind the formers). Cardboard containing 5 pcs.

Junction box 426

Preferable for the installation in precasted concrete.
For use with steel-formers a suitable holding-magnet is available.

Injection vice grip 427

Vice grip with connection for the vent end and a sliding clutch. For quick and save connection between the injection pump and the vent end.

Injection Resins



Functional and easy to use injection resins – all with test reports – makes a complete system * All resin meets the regulation for plastic in contact with potable water, Germany (KTW).

HydroBlock PU-500

Waterswellable, elastic polyurethane injection resin.

Container with 2 X 10 liter (Component A + B), Mixing ratio 1:1

HydroBlock-Inject 583

Waterswellable, hydrophilic acrylic injection resin. Watermixable.

Cleaning of machine and building site with water.

Container with 2 X 10 liter (Component A + B), Mixing ratio 1:1



HydroBlock-Polygel 530

Acrylic injection resin.

The product meets the regulations for injection of the German Railway. Test report.

SILOX EP-800

Low viscous 2-Component Epoxy resin, rigid, free of solvents. Curing without shrinkage. Very good bond strength, even on moist concrete.

For special injection.

Container with 5 or 10 kg (Component A), 2,5 or 5 kg (Component B)

** ARCAN delivers a complete system of 1- and 2-Component injection resins for waterproofing and injectio technologie. Our injection resins are unique.*

This technical information describes the current state of our knowledge of this product. The purpose of the information is to indicate the possible uses of the product and it does not discharge the user from his responsibility to establish the suitability of the product for his specific application. Information on the use of the product is provided in the operating instructions.

ATI 402 [2e- 2001]

© ARCAN AG Waterproof