

RIGID CORE

GLUEDOWN



42: Light industrial general (gluedown only)



33: Commercial heavy



23: Domestic heavy



3,0mm | 6,5mm

Van Gogh

0,55 collection

Van Gogh

GLUEDOWN
RIGID CORE



Warm Brushed Oak VGW12IT | VGW12IT-RKP



Versilay InstaShield
Acoustic underlay for fast, easy installation.
No adhesive needed.

Why gluedown?



Endless design possibilities



No expansion gap required



Acoustic qualities
(up to 15dB, with Versilay InstaShield)

Why rigid core?



Quick to install



Adhesive free



Acoustic qualities
(21dB)



No underlay required



Hides subfloor imperfections

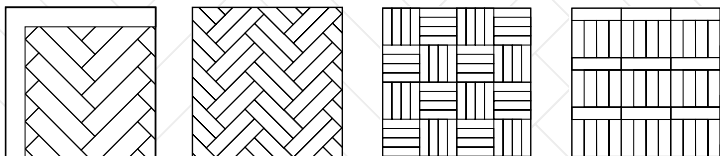


Install over a damp subfloor



Be inspired

There are endless design possibilities with gluedown.
Select SM-VGW products for herringbone dimensions.



Golden Brushed Oak SM-VGW122T | SM-VGW122T-RKP

-  **Gluedown:** 1422,4mm x 228,6mm | 711,2mm x 177,8mm
-  **Rigid core:** 1420,0mm x 225,0mm | 708,0mm x 177,0mm



Warm Brushed Oak 
VGW121T | SM-VGW121T 
VGW121T-RKP | SM-VGW121T-RKP 



Neutral Brushed Oak 
VGW126T | SM-VGW126T 
VGW126T-RKP | SM-VGW126T-RKP 



Golden Brushed Oak 
VGW122T | SM-VGW122T 
VGW122T-RKP | SM-VGW122T-RKP 

 **Registered emboss**



Golden Brushed Oak SM-VGW122T | SM-VGW122T-RKP



Gluedown: 1422,4mm x 228,6mm



Rigid core: 1420,0mm x 225,0mm



Registered emboss



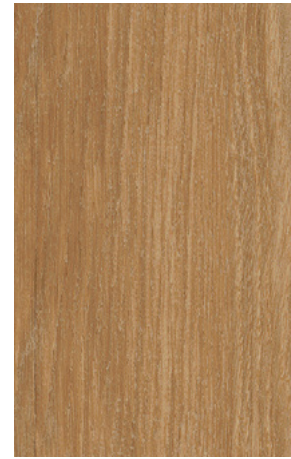
Canadian Nude Oak
VGW8117
RKP8117



Warm Ash
VGW8103
RKP8103



Baltic Limed Oak
VGW8111
RKP8111



Croftmore Oak
VGW8240



Texas White Ash
VGW8105
RKP8105



Canadian Urban Oak
VGW8116
RKP8116



Baltic Washed Oak
VGW8101
RKP8101



Smoked Butternut
VGW8107
RKP8107



Canadian Nude Oak VGW8117 | RKP8117



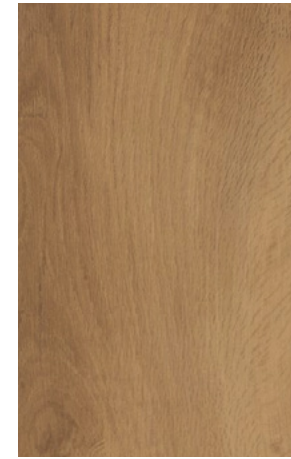
Texas White Ash VGW8105 | RKP8105



 **Gluedown:** 1219,2mm x 177,8mm



French Oak
VGW85T 



Auckland Oak
VGW52T 



Classic Oak
VGW86T 




Natural Prime Oak
VGW115T 



Country Oak
VGW81T 



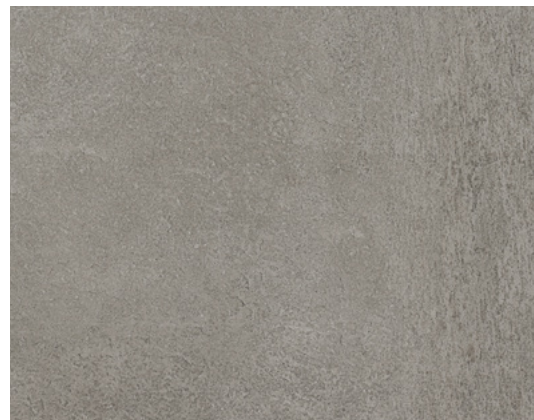
Distressed Oak
VGW82T 

 **Gluedown:** 457,2mm x 609,6mm

 **Rigid core:** 457,0mm x 600,0mm



Palazzo Marble
VGT2413 
RKT2413 



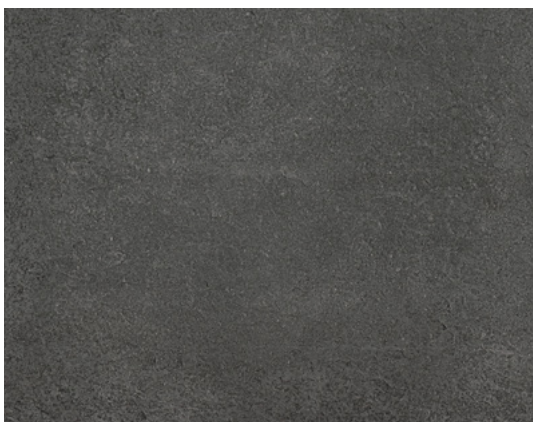
Roman Slate
VGT2422 
VGT2422-RKT 

 **Gluedown:** 457,2mm x 914,4mm

 **Rigid core:** 457,0mm x 935,0mm



Grigio Breccia Marble
VGT3019 
VGT3019-RKT 



Milanese Slate
VGT2420 
VGT2420-RKT 



Palazzo Marble VGT2413 | RKT2413



Grigio Breccia Marble VGT3019 | VGT3019-RKT



Golden Brushed Oak VGW122T | VGW122T-RKP



Golden Brushed Oak VGW122T | VGW122T-RKP



Warm Brushed Oak VGW121T | VGW121T-RKP



Baltic Limed Oak VGW8111 | RKP8111



Croftmore Oak VGW8240



Neutral Brushed Oak SM-VGW126T | SM-VGW126T-RKP



Golden Brushed Oak SM-VGW122T | SM-VGW122T-RKP



Warm Ash VGW8103 | RKP8103



Warm Ash VGW8103 | RKP8103



Smoked Butternut VGW8107 | RKP8107



Warm Brushed Oak SM-VGW12IT | SM-VGW12IT-RKP



Palazzo Marble VGT2413 | RKT2413



Roman Slate VGT2422 | VGT2422-RKT



Milanese Slate VGT2420 | VGT2420-RKT

Floorstyle Designer

Visualise our wide range of floors in any space using our Floorstyle visualiser tool.

designflooring.com/floorstyle



Scan this QR code to try it out for yourselves.

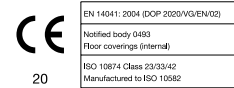


Technical specification

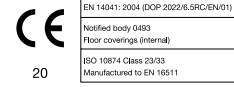
	Standard	Gluedown result	Rigid core result
Size	EN ISO 24342	1219,2 x 177,8 mm 1422,4 x 228,6 mm 711,2 x 177,8 mm 457,2 x 609,6 mm 457,2 x 914,4 mm	1420,0 x 225,0 mm 708,0 x 177,0 mm 457,0 x 600,0 mm 457,0 x 935,0 mm
Thickness	EN ISO 24346	3,0 mm	6,5 mm
Wear layer	EN ISO 24340	0,55 mm	0,55 mm
Locking mechanism¹		N/A	5G® fold down installation system ²
Surface treatment		K-Guard+® PU coating	K-Guard+® PU coating
Guarantee³	Light industrial Commercial Residential	15 years 15 years 30 years	N/A 15 years 30 years
Bevelled edge		Micro	Micro
Mass per unit area	EN ISO 23997	5187 g/m ²	7480 g/m ²
Standards	EN 649 / EN ISO 10582 EN 16511	Heterogeneous PVC -	- Pass (Multilayer modular floorcovering panels)
Classification	EN 685 / EN ISO 10874: Light industrial Commercial Domestic	42: Light industrial general 33: Commercial heavy 23: Domestic heavy	N/A 33: Commercial heavy 23: Domestic heavy
Reaction to fire	EN 13501-1	B _{fl} -s1	B _{fl} -s1
Staining resistance	EN ISO 26987 / EN 423 EN 438-2	Excellent -	- Pass (Grade 5)
Light fastness	EN ISO 105-B02	Pass (≥ 7)	Pass (≥ 6)
Abrasion resistance	EN 660-2 EN ISO 10582 EN 13329 Annex E	Group T Type 1 -	- Pass (> 4000 cycles)
Furniture chair leg	EN 424	N/A	Pass (No visible damage)
Flexibility	EN ISO 24344	Pass	N/A
Dimensional stability	EN 434 / EN ISO 23999	Pass (≤ 0,25%)	Pass (≤ 0,25%)
Acoustic impact noise reduction	EN ISO 717-2 / EN ISO 140-8 EN ISO 10140-1:2016 EN ISO 10140-3:2010+A1:2015	ΔL _w = 4 dB	ΔL _w = 21 dB ΔL _{lin} = 11 dB
Electrical behaviour body voltage	EN 1815	Pass	N/A
Indentation - residual	EN 433/EN ISO 24343-1	Pass (≤ 0,1 mm)	Pass (≤ 0,1 mm)
Castor chair continuous use	EN 425/ISO 4918	Pass	Pass (25,000 cycles)
Thermal resistance	ISO 8302	0,0118 m ² K/W Suitable for underfloor heating Max 27°C	0,0515 m ² K/W Suitable for underfloor heating Max 27°C
Slip resistance⁴	EN 13893 DIN 51130	DS R10	DS R10



Information sur le niveau d'émission de substances volatiles dans l'air intérieur, présentant un risque de toxicité par inhalation, sur une échelle de classe allant de A+ (très faibles émissions) à C. (toutes émissions)



Notified body 0493
Floor coverings (Internal)
ISO 10874 Class 23/33/42
Manufactured to ISO 10582



Notified body 0493
Floor coverings (Internal)
ISO 10874 Class 23/33
Manufactured to EN 16511



Scan here to see full Van Gogh technical data sheets

¹ 5G® and 2G™ are patented technologies invented by Välinge Innovation AB. The 5G® and 2G™ word mark and logo are registered trademarks owned by Välinge Innovation AB and any use of such marks is under license.

² 5G® short edge; 2G™ long edge except SM-VGW121T-RKP, SM-VGW122T-RKP, SM-VGW126T-RKP, which are modified 2G™ on short edge and standard 2G™ on long edge.

³ Subject to terms. Please see our website.

⁴ Slip resistance is measured on freestanding ex-factory product. Slip resistance can be affected by many factors, including but not limited to; product installation and underlayment, surface contamination, use, wear and how the product is maintained. Textural variation along the surface of the product can affect nominal values.

IT'S A NEW DAY

AND WE'RE COMMITTED TO CREATING A BETTER TOMORROW.

Designflooring Evolve® is not only about the planet, but it's about the people too.

Manufactured in ISO 9001 certified facilities for guaranteed quality

Accredited by Sedex for ethical and sustainable manufacturing

Independently verified Environmental Product Declarations (EPDs)

Up to 50% recycled material in the backing layer

Designed for durability to extend the lifecycle of your materials

Eurofins Indoor Air Comfort (Gold) certified



To access this information in French, German, Polish or Dutch simply scan the QR code.



For more information on how
Designflooring can support
you, contact:

+49 (0)211 469 592 03
sales@designflooring.com



designflooring.com